

## CHAPTER - 2 (MANUAL 1)

### 2. Particulars of Organization, Functions and Duties.

#### 2.1 Objective/purpose of the public authority.

- ◆Enhancing and sustaining productivity of land available for primary production systems (crop production, livestock raising, cash/horticultural crop raising, forest-crop raising, fodder and pasture crop raising).
- ◆Maintaining beneficial relationship between land and water to reduce hazards of drought and flood.
- ◆Generating additional employment opportunity and income for secured livelihood in rural areas.
- ◆Supporting the community's demand for food, water and energy by improving the productivity of natural resources system.

#### 2.2 Mission/Vision statement of the public authority.

“The department is fully committed to the Conservation, protection and management of the major natural resources in the state namely, soil, water, vegetation and to make productive use by the users on a sustainable-mode”.

#### 2.3 Brief history of the public authority and context of this formation.

The department was created from the erstwhile Assam Forest Department during the year 1961. Competing demands in agriculture, industry and domestic sectors have resulted in intensive and un-planned and unsustainable utilization of Soil, Water and Vegetation thereby, causing wide spread eco-system degradation and erosion of eco-services and biodiversity. In this context, the department has been entrusted with the task of project plan formulation and implementation of schemes and projects not only to conserve soil, water and vegetation but, also to promote environmental awareness so as to ensure sustainable development.

#### 2.4 Duties of Public Authority.

- ◆Identification of areas which require soil and water conservation interventions.
- ◆Determination remedial measures in consultation with the affected community/individuals.
- ◆Project Plan Formulation.
- ◆Facilitating the implementation of the programmes by the community/individuals by providing technical and financial support.
- ◆Capacity building for organizational and participatory-skills at the grassroots-level to enable the stakeholders to take proper planning, implementation and post-implementation management, credit operation and participatory monitoring and evaluation of projects.
- ◆Eliciting cooperation, participation and contribution from village communities/individuals and also to be willing to maintain, operate, protect and to make productive-use of the assets created.

## 2.5 Main activities/functions of the public authority.

- ◆ Integrated Watershed Management.
- ◆ Management of Jhum lands (Shifting Cultivation) through alternative integrated farming systems and improving the productivity of jhum areas.
- ◆ Reclamation/restoration of Wastelands/degraded lands.
- ◆ Land development: terracing, bunding and reclamation of cultivable lands.
- ◆ Stream-bank erosion control of cultivated and cultivable lands.
- ◆ Water Conservation and distribution by impounding water of streams and rivulets and subsequently distributing to development land for crop-husbandry and others.
- ◆ Afforestation of barren hillocks or degraded lands by planting suitable tree species.
- ◆ Agro-forestry/agro-horticulture/agro-silvi pastoral farming systems by growing forest crops/horticultural crops/fodder or forage crops compatible with agricultural crops in arable lands.
- ◆ Horticulture/Plantation Crop Development by growing crops such as coffee, para-rubber, cashew, black pepper, citrus, temperate fruit trees and others.
- ◆ Reclamation/revitalization of traditional water-harvesting systems and others which concern with water management.
- ◆ Extension Training support, Field Demonstration, etc.
- ◆ Creating environmental awareness and other natural resources management campaign.

## 2.6 List of services being provided by the public authority with a brief write-up on them.

To confront the gargantuan task related to land and water resources depletion, the department has taken up, in its right earnest, various resources conservation measures and development programmes in arable and non-arable lands through the following programmes/projects.

- **Jhum Control Programme** : This is one of the major programme aimed at combating further deterioration of the fertile top-soil due to jhum/bun cultivation. The main thrust of this programmes is to provide an effective supporting base for permanent settlement of Shifting/Bun Cultivators. Initiated in 1974-75, the programme comprise of the following services :-
  - ◆ Providing development of land for permanent/settled cultivation with assured irrigation facilities.
  - ◆ Providing follow-up services by way of free supply of inputs mic seeds and plants, manures and fertilizers including cultivation cost for three years at the gradual-sliding scale.
  - ◆ Provision of cash/horticultural crops.
  - ◆ Constructions of link roads to work-areas.
- **Watershed Management Programme** : This is a package-scheme aimed at integrating various soil and water conservation measures to be taken up in selected micro-watersheds. The main objective of this programme is to bring about a continued utilization of land and water resources for optimum production. The services offered in this programme are :-
  - ◆ Terracing

- ◆ Land Reclamation
  - ◆ Follow-up programme
  - ◆ Water harvesting
  - ◆ Irrigation
  - ◆ Drinking Water Facility
  - ◆ Construction of link-roads to work areas
  - ◆ Afforestation
  - ◆ Cash/Horticultural Crops Plantation
  - ◆ Erosion Control Works
  - ◆ Fodder and Pasture Development
- **Soil Conservation Programmes in (General Areas) :** This programme covers the general areas outside and those not specifically covered by any of the Programmes/projects. Its main objective is to reduce the erosion hazards and land degradation where individual farmers/users adopt unsustainable land use practices. Services undertaken under this programme include the following:-
    - ◆ Terracing
    - ◆ Erosion Control Work
    - ◆ Water Conservation and distribution
    - ◆ Afforestation
    - ◆ Water Harvesting and farm-ponds.
    - ◆ Cash/Horticulture Development Programme
- **RIDF : NABARD LOANS :** To tide over the paucity of funds under the State Plan Budget, the department, with financing from the rural Infrastructure Development Fund of the NABARD has given the Basic Soil and Water Conservation Projects. The services constitute the following :-

<b>RIDF-V</b>	<b>RIDF-IX</b>
1. Head Work/Diversion Dam/Irrigation Channel.	1. Head Work/Diversion Dam/ Irrigation Channel.
2. Farm Ponds/Water Harvesting.	2. Farm Ponds/Water Harvesting
3. Erosion Control Works/ Gabion/ Retaining Wall.	3. Erosion Control Works/ Gabion/ Retaining Wall.
4. Bench Terracing.	4. Bench Terracing.
5. Contour Bunding	5. Contour Bunding
6. Improvement of Existing Paddy Fields.	6. Improvement of Existing Paddy Fields.
	7. Construction & Maintenance of playable approach roads.
	8. Training.
	9. Miscellaneous

- **Watershed Development Programme in Shifting Cultivation Areas :** This is a 100% special Central Assistance Project taken up on a watershed-mode for treatment of arable and non-arable lands affected by shifting cultivation and to provide alternative farming methods to the farming community who are practicing this form of un-sustainable farming activities. The services offered by this project are :-
  - ◆ Contour Bunding
  - ◆ Peripheral Bunding
  - ◆ Agro-horticulture
  - ◆ Improvement of existing paddy fields
  - ◆ Crop Demonstration
- **Arable Land :**
  - ◆ Agro-Forestry
  - ◆ Silvi-Pastoral
  - ◆ Improvement of natural Forests
- **Non-Arable Land :**
  - ◆ Checkdam
  - ◆ Gully Plug
- **Drainage Line Treatment :**
  - ◆ Checkdam
  - ◆ Gully Plug
- **Water Harvesting**
- **Household Production System :**
  - ◆ Kitchen gardening
  - ◆ Compost pit
- **Service Sector :**
  - ◆ Carpentry
  - ◆ Tailoring
  - ◆ Mud brick making
  - ◆ Sprayers
  - ◆ Blacksmithy
- **Small Livestock :**
  - ◆ Poultry/Piggery
- **Integrated Wasteland Development Programme :** This project is sponsored by the Department of Land Resources of the Ministry of Rural Development. The Prime objective of this programme is to reclaim/restore the degraded lands through integrated natural resources management system, with a watershed as a management unit. Till 2003-2004 the State

Department of Community and Rural Development was the nodal department. The canalizing agency then, were the District Rural Development Agencies. From the year 2004-2005 onwards, the Soil and Water Conservation Department has been made the nodal department for this programme. Major services under this programme are as follows :-

◆ Contour bunding, trenching

◆ Improvement of the existing cultivable/cultivated land.

◆ Construction of Check dam, Protection work

◆ Dug-out Pond

◆ Water Harvesting and Farm Ponds

◆ Water Conservation and Distribution

◆ Nursery raising for fodder, fuel-wood, timber, horticultural crops, etc.

◆ Pisciculture

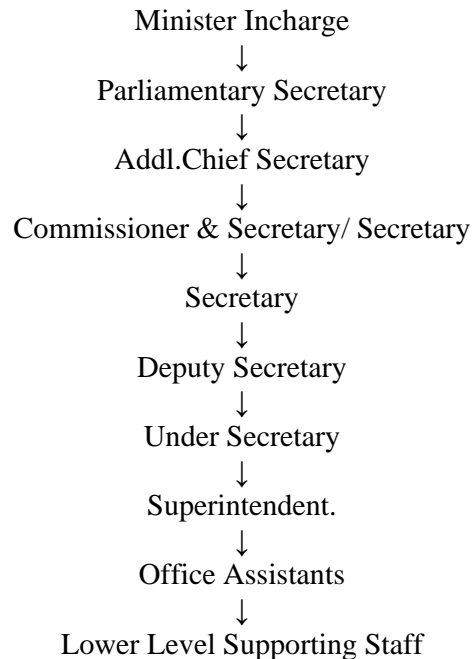
◆ Animal Husbandry

◆ House-hold activities.

- **Integrated Watershed Management Programme** : During 2009-10, the Government of India, Ministry of Rural Development, Department of Land Resources, has approved for treatment of 30,000 hectares in 18 watershed projects of the State. The Central and State share sharing component is in the ratio of 90:10 percent. The main objectives of this programme are as follows:
  1. To dissipate soil and water erosion and surface run-off
  2. To harvest/ recycle surface runoff and rainwater
  3. To enhance soil moisture regime/ water holding capacity
  4. To promote sub-surface flow, base flow and ground water recharge
  5. To improve soil health and tilth
  6. To improve production and productivity
  7. To promote generation and gainful employment opportunities
- **Accelerated Irrigation Benefits Programme** : This is a Central assistance scheme sponsored by the Ministry of Water Resources. It is in the form of central grant (90 % of the project cost) and the balance cost of the project (10%) as the State's share which is to be arranged by the state government from its own resources. The main thrust of the programme is to increase the area under irrigation thereby increasing the productivity of the area and improving the socio-economic condition of the people.

## 2.7 Organizational Structure Diagram at various levels namely State, Directorate, Region District, Block etc., (whichever is applicable).

### A. State Level Administrative Department.



### B. Directorate and District Level- Please visit [www.megsoil.gov.in-Annual Report 2009-10](http://www.megsoil.gov.in-Annual Report 2009-10)

## 2.8 Expectation of the Public authority from the public for enhancing its effectiveness and efficiency.

- ◆ To actively and voluntarily participate and contribute in the process of project plan formulation, implementation and post implementation management and aftercare, to satisfy their needs and aspirations.
- ◆ Their Willingness to make productive use, maintain and manage the resource-assets created for them.

## 2.9 Arrangements and methods made for seeking public participation/contribution.

- ◆ Motivation and awareness campaign
- ◆ Extension and training support for development of skill, attitude.
- ◆ Participatory Rural Appraisal
- ◆ Field demonstration
- ◆ Capacity building for organizational and participatory skill to enable the community/individuals to take proper project plan formulation, implementation, management and participatory monitoring and evaluation of developmental programmes.
- ◆ Facilitate implementation of the programmes by the people by providing technical and financial support and incentives.
- ◆ Through empowerment of the community.
- ◆ By constituting small and homogeneous groups namely, Self Help Group, Users Group, etc.
- ◆ Research Activities.

## **2.10 Mechanism available for monitoring the service delivery and public grievance resolution**

The Department has well-defined monitoring and evaluation mechanism/system. Apart from the monitoring and evaluation units that are in place in the Department, the senior grade officers of the directorate including the Executive Divisions do make frequent inspection and monitoring on the service delivery status (nature, extent and quality) extended by the department through various programmes and projects. In the Participatory Projects, the people also have a very significant role to monitor the service delivery through the Participatory Monitoring and Evaluation System. It may be cited here that, periodically monitoring are also being made by the officials of the public authority that sponsors the project/programme. Also, that external evaluation mechanism for the projects, which are externally-aided are in place.

## **2.11 Addresses of the main office.**

Directorate of Soil & Water Conservation,  
Administrative Building,  
Room No. -113 ,  
Lower Lachumiere  
Shillong-793001  
Meghalaya

## **2.12 Morning hours of the Office : 10 AM.**

Closing hours of the Office : Summer - 5 PM, Winter - 4:30 PM.